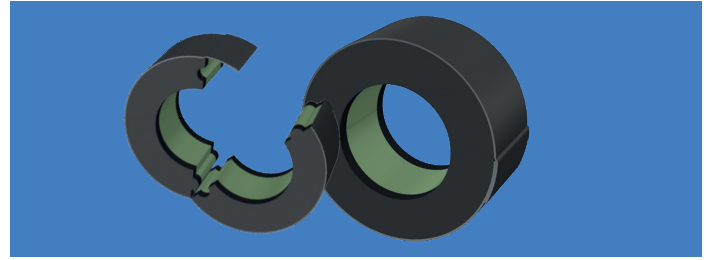


K-FLEX ▶ 360 PIPE SUPPORT

K-FLEX® 360 INSULATED PIPE SUPPORT



DESCRIPTION ▶

K-FLEX 360 Insulated Pipe Supports are comprised of a hinged, 360° position-free, rigid polyurethane core with a high compressive load that is joined by two NBR/PVC-based elastomeric insulation collars. An outer PVC jacket with overlapping tab system serves as a vapor barrier.

AVAILABILITY ▶

K-FLEX 360 Insulated Pipe Supports are black in color and are available in 1/2" to 2" wall thickness, in diameter sizes ranging from 3/8" ID to 6" IPS (ID range is subject to variation depending on wall thickness).

Pipe hanger clamps are sold separately and are not available from K-Flex USA.

APPLICATIONS ▶

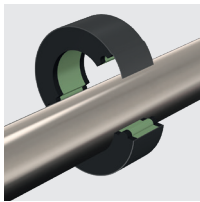
K-FLEX 360 Insulated Pipe Supports are recommended for applications with service temperatures ranging from -40°F (-40°C) to +175°F (+80°C). The product is used to eliminate insulation gaps and ensure proper insulation thickness at load-bearing hanger points, which helps to maintain total insulation system integrity. Without them, the weight of the pipe being placed in the support can compress the insulation, reducing thickness and creating a thermal short circuit that results in potential condensation formation.

INSTALLATIONS ▶

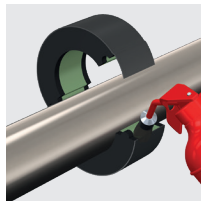
K-FLEX 360 Insulated Pipe Supports provide a quick, reliable alternative to traditionally recommended, more time consuming solutions. K-FLEX recommends that insulation is installed on non-operational systems with clean, dry surfaces in ambient conditions between 40°F and 100°F. A properly sized insulating support should be placed around the pipe, with an approved contact adhesive applied to the urethane's grooved seams. The overlapping tab's release liner should be pulled and closed to seal the support. Once the metal pipe hanger collar is fixed around the support system, the elastomeric collars should be sealed to the elastomeric insulation tubes with an approved contact adhesive applied to both surfaces.

TECHNICAL DATA ▶

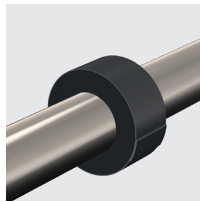
PHYSICAL PROPERTIES		K-FLEX® 360 PIPE SUPPORT	TEST METHODS
Main Composition		Rigid polyurethane core with NBR/PVC-based elastomeric insulation collars, wrapped by an outer PVC jacket with overlapping tab system	
Compressive Strength (perpendicular)		130 psi	ASTM D1621
Thermal Conductivity (Btu-in/hr-ft ² -°F)	75°F (24°C) Mean Temp	0.245 (Elastomeric Collar) 0.26 (Polyurethane Core)	ASTM C177 ASTM C518
Density		6 lb/ft ³ (Polyurethane Core)	ASTM D1622
Operating Temperature Range		-40°F (-40°C) to +175°F (+80°C)	
Water Vapor Permeability (Dry Cup)		<0.01 perm-in (Elastomeric Collar)	ASTM E96



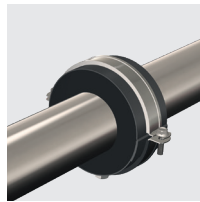
Place the insulating support around the pipe.



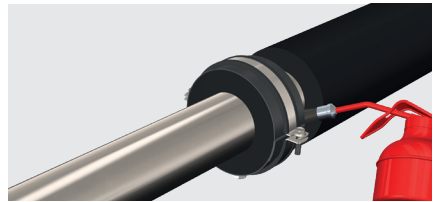
Apply K-FLEX contact adhesive to the half-collars.



Seal the support by overlapping the adhesive tabs.



Fix your collar* around the support.



Glue the support to the insulating material.

*Pipe hanger clamps are sold separately and are not available from K-FLEX USA.

The K-FLEX USA website contains the most recent version of all K-FLEX USA literature. Please refer to the website for current versions of K-FLEX USA literature at www.kflexusa.com



K-FLEX USA LLC 100 K-Flex Way Youngsville, NC 27596
 Phone: 800-765-6475
 info@kflexusa.com
www.kflexperformancefoams.com