

Advantages of K-Flex Factory-Fabricated Products vs. Field-Fabricated Products

K-FLEX USA offers many “factory-fabricated” products as an alternative to “field-fabricated” products. Examples of “factory-fabricated” products would be:

- Seam-Seal tubing
- Sheet with PSA
- K-Fit factory-fabricated fittings (45s, 90s, Tees, P-Traps, Victaulic fittings)
- K-FLEX Clad jacketed insulation (tubes and sheets)
- K-Flex 360 pre-insulated pipe hangers
- K-Flex Solar

All of these “factory-fabricated” products offer labor savings on the job site, but more importantly, from an owner / engineering point-of-view, they offer greater reliability and performance. When a product is manufactured under controlled conditions with precision equipment, it will be fabricated correctly 100% of the time, ensuring a good fit and excellent performance. Most job failures are the result of poor onsite field conditions and misapplication of the insulation. Factory-fabricated products eliminate most of these issues. A systems approach to specifying insulation materials means that all products on the job will be compatible and will provide optimum performance.

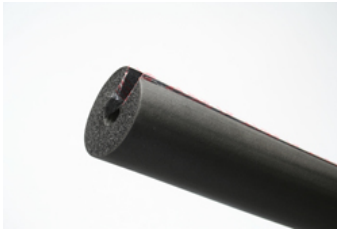
Advantages of specifying Factory-Fabricated Products using a systems approach include:

- Single supplier for all products needed for the insulation project
- Products are manufactured under controlled conditions in an automated fashion
- Assured good fit
- Products are designed to be compatible for optimum performance
- Faster installation – less time on the job site
- Improved appearance
- Less use of contact adhesives on job site
- Fewer seams – less chance of water / moisture vapor penetration
- Assured performance / excellent job integrity
- Lower total installed cost
- Lower maintenance costs

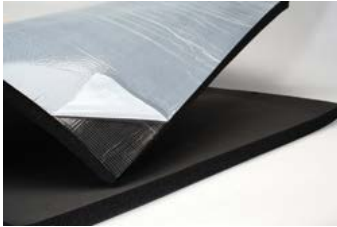
Using factory-fabricated products and a systems approach to specifying materials is the best way to assure a fast job with excellent appearance and great performance.



Seam-Seal Tubing



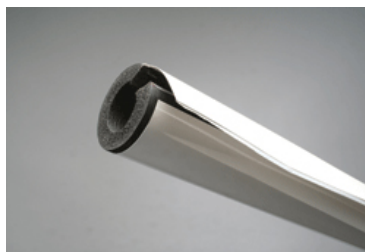
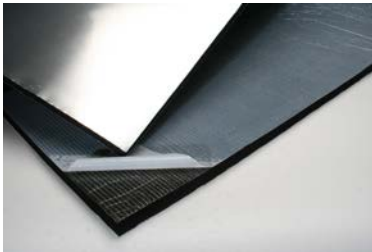
Sheet with PSA



K-Fit factory-fabricated fittings (45s, 90s, Tees, P-Traps, Victaulics)



K-FLEX Clad pre-jacketed insulation (tubes and sheets)



Pre-insulated pipe hangers

